

# Video Media Server setup instructions



Note: Install and connect the Video Media Server (VMS1100) first. Then connect any Media Clients (IPC1100).

## Disconnect

your existing set-top box. Set it aside along with the power cord to pack up later.

## Connect

your new VMS:

- Connect the coax cable from the VMS to a coax outlet.
- Connect the HDMI cable from the VMS to your TV.
- Connect the power cord from the VMS to an electrical outlet.

## Alternate option: Make the connections using composite cables

TV not HDMI compatible? No problem. Connect the composite cables instead, making sure to match the cable colors to the back of the VMS and TV.

## Activate

your VMS by turning it and your TV on. Then follow the on-screen instructions.

## Program

your Fios TV Remote.

The remote control is preprogrammed to work with any Fios TV set-top box.

For universal remote features, pair the remote with your TV.

On the Fios TV remote press Menu then scroll to Customer Support> Top Support Tools> Program Remote

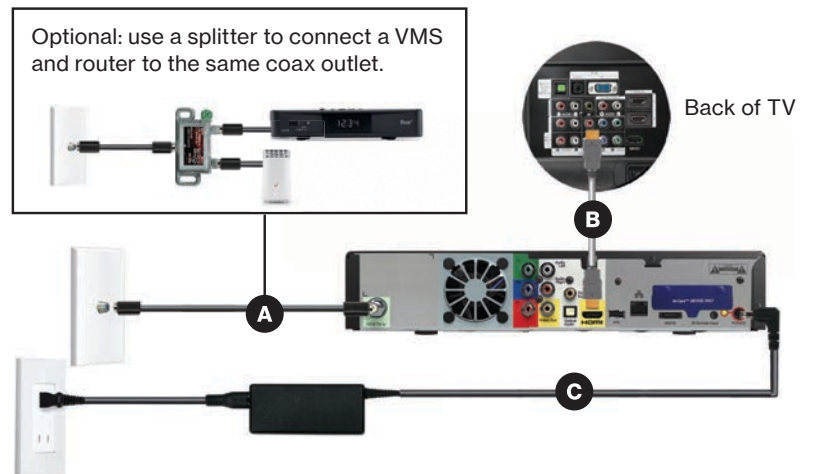
## Pack

your old VMS and power cord in the shipping box from your new equipment (if completing a swap).

## Seal

the box with your old equipment and apply the return label provided over the original shipping label. Refer to the return label for instructions on where to take your package.

**For setup help, answers to common Fios questions and more, visit [verizon.com/support](http://verizon.com/support).**



11260946

ADD/REPAIR VMS 1100  
& MEDIA CLIENT  
09-23

# Media Client setup instructions



Note: Install and connect any Media Clients (IPC1100) after installing and connecting the Video Media Server (VMS1100).

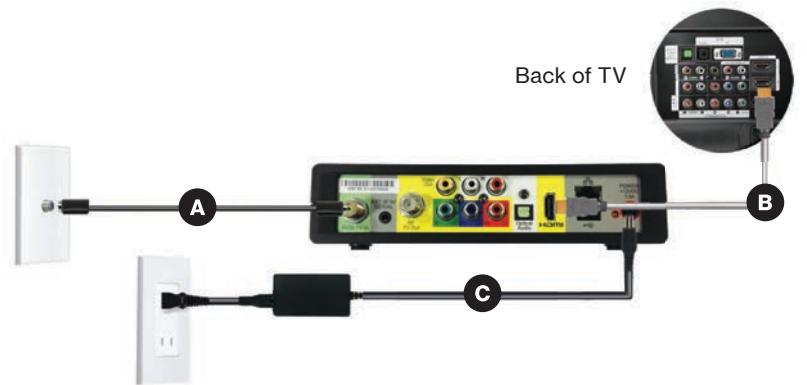
## Disconnect

your existing set-top box. Set it aside along with the power cord to pack up later.

## Connect

your new Media Client:

- Connect the coax cable from your Media Client to a coax outlet.
- Connect the HDMI cable from your Media Client to your TV.
- Connect the power cord from your Media Client to an electrical outlet.



## Alternate option: Make the connections using composite cables

TV not HDMI compatible? No problem. Connect the composite cables instead, making sure to match the cable colors to the back of the Media Client and TV.



## Activate

your Media Client by turning it and your TV on. Then follow the on-screen instructions.

## Program

your Fios TV Remote.

The remote control is preprogrammed to work with any Fios TV set-top box.

For universal remote features, pair the remote with your TV.

On the Fios TV remote press Menu then scroll to Customer Support> Top Support Tools> Program Remote

## Pack

your old Media Client and power cord in the shipping box from your new equipment (if completing a swap).



## Seal

the box with your old equipment and apply the return label provided over the original shipping label. Refer to the return label for instructions on where to take your package.

**For setup help, answers to common Fios questions and more, visit [verizon.com/support](https://www.verizon.com/support).**